



# Monthly Messenger

Central Minnesota Woodworker's Association

Volume 4 Issue 2  
February 2004

## Fellow Woodworkers - John Wilson, Secretary

By Ron McKeever

John has been in the Woodworkers Association for a couple of years. He was raised on a 180 acre farm just south of Rice. Though his dad was busy on the farm with family and cattle, he found time to do carpentry projects, and John learned by working with him.



John attended Cathedral High school, the Tech college, and St. Cloud State, and after a couple of other jobs, he began working at Xcel Energy in 1984 (20 years ago). Time sure flies when you're having fun!

John's job as an electrical designer with Xcel tends to be very hectic, especially in the summer with all the construction in the St. Cloud area. John can see the light, though, as this spring his youngest of 3 children will be done with college. Already contemplating what to do with the additional cash flow, he has his eye on a 30 x 40 shop. (I'm very jealous!) He is looking for suggestions on how to design and furnish it.



John standing by the fireplace mantel he created for his Sartell home.

## January CMWA Meeting Recap

Sauk Rapids Middle School January 21, 2004 at 7PM  
Recap taken from secretary's meeting minutes

### OLD BUSINESS:

- None

### NEW BUSINESS:

- After a brief discussion regarding various sample clocks made by group members John Wilson and Jon Cay, Darren McKeever moved to accept John Cays' clock as the clock design of choice, to be used for the CMWA's Student Outreach Program this year. Motion was seconded and carried.
- Volunteers are needed for the Outreach Program.
- CMWA President Ron McKeever has chosen to highlight a new club member in each month's Newsletter. The February Newsletter will highlight club member, and current Secretary, John Wilson.
- Darren McKeever has printed all of the club members' names on name tags to facilitate a monthly drawing for an attendance prize.
- January's Door Prize, a Veritas Scriber, was won by a member in attendance.
- CMWA met at Mississippi Heights for a short time. The group then traveled, via caravan, to Custom Caseworks, Inc., a Sauk Rapids manufacturer of ready-to-assemble MDF furniture components. Owner, John Lindholm, treated the CMWA to a tour of their manufacturing floor in action. I'm sure all in attendance would agree it was a most informative tour. The CMWA would like to thank John for being such a gracious host. (To read more about the tour, please see Page 3.)

NEXT MEETING: Wednesday February 18th, 7 PM AT  
MISSISSIPPI HEIGHTS MIDDLE SCHOOL

**Please remember to pay your 2004 dues. Mail \$25 to CMWA, PO Box 1955, St. Cloud, MN 56302 or bring to a monthly meeting. Please include your name, address, phone number and email address.**

## February 2004

Sun	Mon	Tue	Wed	Thu	Fri	Sat
1	2	3	4	5	6	7
8	9	10	11	12	13	14
15	16	17	18 CMWA	19	20	21
22	23	24	25	26	27	28
29						

**Next Meeting:** February 18th at 7:00 PM at Mississippi Heights Middle School

**Board Meeting:** Feb 18th at 6:15 PM at Coborn's in SR

### February Meeting

Demonstration on working with stained glass.

### Northern Woods Exhibition

The MN Woodworkers Guild invites you to enter the 24<sup>th</sup> annual exhibition at Southdale Center in Edina, Mn, April 29 - May 2, 2004. For more information please visit [www.minnesotawoodworkersguild.com](http://www.minnesotawoodworkersguild.com). Cash prizes and gift certificates awarded in thirteen categories. Entry forms due March 16<sup>th</sup>. For an entry form, go online or contact [cpitschka@mn.rr.com](mailto:cpitschka@mn.rr.com).

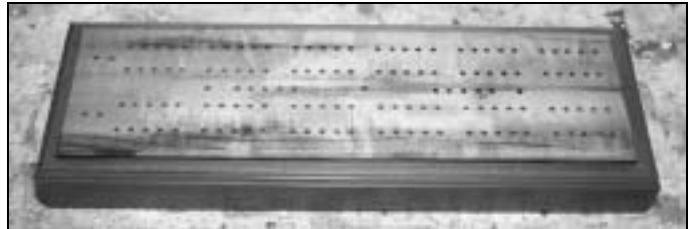
### CMWA Outreach Program

The CMWA is once again conducting classes as a part of the CMWA Outreach Program. The four sessions will be held **February 26<sup>th</sup>, March 4<sup>th</sup>, 11<sup>th</sup>, and 18<sup>th</sup>**. We are still in need of volunteers. Please contact **Alex Neussendorfer** at 253-1262 if you are willing to help.



John Caye's clock design (center) was selected as the design for students to create.

### Projects on Display



Rick Gaken crafted this cribbage board out of Brazilian Tigerwood.



Clem Sauer used his *DeWALT* scroll saw to carefully create these beautiful pieces.



For this Nativity, Clem first cut the board into three layers and a different design was scrolled into each layer. The layers were then clued back together.

### Central Minnesota Woodworker's Association

**President** Ron McKeever  
**Vice President** Roland Johnson  
**Treasurer** Dan Iburg  
**Secretary** John Wilson

**Board of Directors** Cindy Johnson, John Kirchoff, Marty Mahowald, Darren McKeever, Scott Schroeder

**Newsletter** Darren McKeever

## Central Minnesota Woodworker's Association

### Custom Caseworks, Inc. by Darren McKeever

For the January meeting, the CMWA toured Custom Caseworks, Inc. The Sauk Rapids business, founded in 1994, is a commercial wood shop focusing on current technologies to supply engineered wood products to the wood products industry.

Custom Caseworks uses the latest technology to produce large volumes of high-quality wood products. Working



Caseworks' laminate press can process 400 sheets of wood in a 10 hour shift.

with other businesses, they are able to use their large machines to rapidly create many engineered wood components used in the office furniture and store fixtures industries. Varying with demand, they maintain around 40 employees. As well as a full first shift, they run 7-10 people on a second shift.



Caseworks' newest, computer-controlled, multi-head dual router is capable of changing profiles automatically. The raw material is loaded onto the bed and the finished product is pulled off. The machine can also be serviced on-the-fly; bits can be replaced as the machine continues to work.

**MATHEW HALL**  
**LUMBER COMPANY**

127 6th Ave. N., St. Cloud, MN 56303 320.252.1920 [www.mathewhall.com](http://www.mathewhall.com)

**THANK YOU!**

Mathew Hall supports the Central Minnesota Woodworker's Association. Thank you for your business and input on new products. In order to keep up with your needs, please inform us of new products and services you would like to see us provide.



www.thecmwa.com  
 320-968-8859  
 newsletter@thecmwa.com

Inside This Issue

Fellow Woodworkers	1
Meeting Recap	1
Calendar of Events	2
Northern Woods Exhibition	2
Projects on Display	2
CMWA Outreach Program	2
Custom Caseworks, Inc.	3
Map	4

Mississippi Heights Middle School



**Next Meeting:**  
**Wednesday, February 18th at 7:00 PM**  
**at Mississippi Heights Middle School**

Choose from the largest in-house selection of cabinet and furniture hardware in the industry. Over 8000 items in stock.

Toll Free: 1-800-383-0130  
 24 hr. Fax: 1-888-811-9850  
 Web: www.wwhardware.com  
 Email: info@wwhardware.com

Call for our FREE 316 page specification catalog

**Woodworker's Hardware**  
 PO Box 180, Sauk Rapids, MN 56379  
 NOTE: All orders will be shipped Speedee or UPS